



# The Canal Post

## Autumn 2014 Edition

Sept  
Oct  
Nov

### A Note to the Residents of Waterville

I would like to thank all of the residents of Waterville for their patience and cooperation during the water crisis which began August 2<sup>nd</sup>. Our City was able to continue functioning during this time and assist those in need until the water was deemed safe.

The City of Toledo is continuing to address the issues with Lake Erie where the water intake is located. A link to the City of Toledo's Public Utilities Department reports the daily readings. Click here <http://toledo.oh.gov/services/public-utilities/water-treatment/agal-toxin-tap-levels/> for more information. The World Health Organization recommends not to drink water when microcystin reaches a level of 1.0. The City of Toledo is required to report to the Ohio EPA any result over 0.5. They will continue to closely monitor the water quality and alert the public if the situation changes.

Please sign up at [www.lucascountyalerts.com](http://www.lucascountyalerts.com) to receive text alerts if there would be another water advisory as well as any other county wide event such as weather. Waterville will continue to streamline the notification process to our residents. The best source of information will be the local news stations as well as our website ([www.waterville.org](http://www.waterville.org)). Waterville is also implementing a water distribution station for our residents which would provide drinkable water from the Northwestern Water & Sewer District (water source: City of Bowling Green) during a water emergency. This information will also be posted on our website.

Thank you, again for your patience as we go through the algal bloom season. We will continue to monitor the water safety closely and notify residents of any changes. Please call our office with any questions or concerns at 419.878.8100.

Mayor Lori Brodie  
City of Waterville

See Page #9 "From This Old Catch Basin"  
for ways you can help keep our water safe.

### DATES TO REMEMBER:

**SEPTEMBER:** 1-*Offices Closed* Labor Day | 2 Trash Pick-up | 8-City Council Meeting | 13 - Fishing Derby | 22-City Council Meeting  
26-RDB Pre Party | 27-RDB Parade & Festival

**OCTOBER :** 6-Unlimited Trash Pick Up | 13-Leaf Pick Up Begins & City Council Meeting | 27-City Council Meeting | 31-Halloween & 3rd Quarter Estimated Taxes Due

**NOVEMBER:** 10-City Council Meeting | 24-City Council Meeting | 27-28 *Offices Closed* Thanksgiving

**JOIN THE CITY OF WATERVILLE FOR THE 41<sup>ST</sup> ANNUAL  
ROCHE DE BOEUF FESTIVAL  
SATURDAY SEPTEMBER 27, 2014 9 A.M. TO 4 P.M.**

See pages 11, 12 & 13  
for more information

Festival Provided by: Waterville Area Chamber of Commerce in cooperation with many generous sponsors.

### Inside This Issue

Letter from the Mayor ~ Dates to Remember	1
Employee Recognition, Council Contact & Schedule Info ~ Estimated Income Tax Schedule	2
Fishing Derby Info	3
Tree Care ~ Halloween Safety Info	4
Trash & Recycling Information	5
Unlimited Trash Pick Up ~ Daylight Savings	6

Utility Drop Off Box ~ Library ~ Road Const. Update	7
Leaf Collection Schedule	8
"From this Old Catch Basin" ~ A little bit of history ~ Fire Hydrant Testing	9
911 Emergency ~ Bicycle Safety	10
Roche de Boeuf Festivities & Historical Society Events	11,12 & 13
"Flash Points" ~ Fire Safety Tips	14
Engraved Brick Program	15



## City Council Meeting Schedule

Mondays at 7:30pm  
At the Town Hall

**September**  
8 & 22

**October**  
13 & 27

**November**  
10 & 24

View Live on  
Time Warner Cable Ch. 5  
Review  
Agendas & Minutes  
on web site

[www.waterville.org](http://www.waterville.org)



## ESTIMATED INCOME TAX DUE

City of Waterville Estimated Tax Payments are due Quarterly. Payments should be sent to the Regional Income Tax Agency (R.I.T.A.)

When completing your tax return if you complete the Estimated Tax Section Line #20 on an Individual Tax Return (Form 37) R.I.T.A. will send you quarterly invoices. If you did not fill in the form, or if you were not aware that you were going to be submitting Estimated Payments, you can complete A Declaration of Estimated Tax (Form 32). Every person who anticipates any taxable income (City Ordinance 171.07) must file a declaration of Estimated Taxes if you anticipate owing more than \$10 in income tax during the year.

\*\* You are not required to pay Estimated Tax if your employer does courtesy withholding from your pay check.

QUARTER	ESTIMATED PAYMENT DUE
1ST ~ January 1 to March 31	APRIL 15
2ND ~ April 1 to June 30	JULY 31
<b>3RD ~ July 1 to September 30</b>	<b>OCTOBER 31</b>
4TH ~ October 1 to December 31	JANUARY 31

If you need further information please visit the R.I.T.A. website [www.ritaohio.com](http://www.ritaohio.com), or call their toll free phone # 800-860-7482 for assistance.



## CITY OF WATERVILLE CONTACT INFORMATION

TOWN HALL GENERAL INFORMATION	878-8100
UTILITY BILLING	878-8101
INCOME TAX DEPT.	878-8102
PUBLIC WORKS	878-8108
POLICE (NON EMERGENCY- M-F 8AM-4:30PM)	878-8184
FIRE (NON EMERGENCY- M-F 8AM-4:30PM)	878-0165

FOR **NON-LIFE THREATENING** EMERGENCIES AFTER HOURS

CALL: 419-878-6666

**FIRE & POLICE EMERGENCIES - 911**

### MAYOR

**LORI BRODIE** 8119 BRIDGEHAMPTON DR. 878-8818

### COUNCIL MEMBERS

BARB BRUNO	137 S. RIVER RD.	878-8865
MICHELINE KRISE	420 ELM ST.	819-9052
CHARLES LARKINS	63-A NAUGATUCK WAY	343-5121
JOHN ROZIC	724 VILLAGE PARKWAY	878-7405
TIM PEDRO	514 CEDAR LANE	878-2364
JIM VALTIN	142 WILKSHIRE DR.	878-0159



### MUNICIPAL ADMINISTRATOR

JAMES BAGDONAS



TOWN HALL 25 N. SECOND ST. 878-8100  
OFFICE HOURS: MON - FRI. 8 AM - 4:30 PM

Visit us at: [www.waterville.org](http://www.waterville.org)

## EMPLOYEE RECOGNITION

*The City of Waterville  
Wishes to recognize the following  
employees for their continued  
commitment to our community.*

### **Volunteer Firefighters**

John C. Cannon ~ 15 years

Randy Mead ~ 5 years





**The Rotary Club of Waterville  
in cooperation with the  
City of Waterville to host  
Family Fun & Fishing Derby  
Waterworks Park  
Saturday, September 13th  
8:00 A.M.—1:00 P.M.**

**(Fishing to start promptly at 8:30am ending at 10:00am)**

- Registration open to the first 60 registrants  
Ages 6-14
- Registration forms are available at:  
City of Waterville  
Municipal Building  
25 N. Second St. (419)878-8100
- Please return completed forms to the  
**City of Waterville by September 5th**

**Bring your own rod &  
tackle set-up**



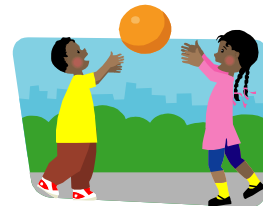
A limited number  
of rods & tackle  
will be available

Fishing Bait has been donated  
by **Maumee Tackle**

Pizza &  
refreshments  
will be available



Games & Activities provided  
by the Anthony Wayne  
Community YMCA



**Come out & see dis-  
plays by:**

- ♦ The Anthony Wayne Community YMCA
- ♦ Officer Valvano & K9 unit

**Prizes will be awarded in these categories for age groups 6-10 & 11-14:**

- 1. Most Fish Caught**
- 2. Longest Fish Caught**

**Also enter free drawings by local sponsors**

**For Fishing Derby  
Registration forms  
please visit the website  
[www.waterville.org](http://www.waterville.org)  
or you can pick one up  
at the Municipal Building  
25 North Second St.**

# T C R A E R E E



## Trimming & Pruning

Trimming of trees located within the public right-of-way to a safe height (6'6" to 7') above the sidewalk and more extensive pruning may be requested by submitting a written request to the Public Works Department, Town Hall, 25 N. Second St.. The Public Works Dept. will direct your request to the Waterville Tree Commission. Any tree limbs thought to be hazardous should be immediately reported to Town Hall at 878-8100 or the Public Works Dept. at 878-8108.

## Mulching

There are many benefits to mulching your trees. It helps maintain soil moisture and control weeds. Some mulch can improve soil structure and

drainage. Organic mulch is preferred to inorganic materials due to the soil enhancing properties of organic materials.

If you chose to mulch the trees on your property, it is important that you do so properly. Too much mulch may actually harm the trees. Over mulching or creating a "mulch volcano" may cause problems for trees, inviting insects and disease. It is better to mulch wide than mulch deep.

It is also important to keep the mulch away from the trunk of the tree. It is best to form a ring of mulch around the tree, keeping the mulch 6" away from the trunk. A depth of 2 to 4" of mulch is generally recommended. The proper shape is similar to a doughnut. This

will hold water but won't invite insects and disease to infest the trunk.

## Watering

With the warm, dry weather we have been having, it is important to water the trees on your property. It is especially important for newly planted trees to get regular watering.

## More Information

If you have questions regarding the topics covered here or other tree information, there are many resource pamphlets from the International Society of Arboriculture available at Town Hall.





## SAFE & HAPPY HALLOWEEN




Friday October 31st  
6:00 p.m. - 8:00 p.m.

*Halloween may be a fun holiday for kids, but for parents, trick-or-treat time can be a little tricky. Concerns about children's safety, whether they are out in the neighborhood or back home with bags of booty - can darken the day more quickly than a black cat. But not to worry! To make Halloween a treat for all, follow these safety tips:*

### MAKE SURE YOUR KIDS DRESS UP SAFELY

-  Check that the costumes are flame retardant so the little ones aren't in danger near burning jack-o-lanterns and other fire hazards.
-  Keep costumes short to prevent trips, falls, and other bumps in the night.
-  Make sure kids wear light colors or put reflective tape on their costumes.
-  Trick-or-treaters always should be in groups so they aren't a tempting target for real-life goblins. Parents should accompany your children.

### MAKE TRICK-OR-TREATING TROUBLE FREE

-  Make sure older kids trick-or-treat with friends. Together, map out a safe route so parents know where they'll be. Tell them to stop only at familiar homes where the outside lights are on.
-  Try to get your kids to trick-or-treat while it's still light out. If it's dark, make sure someone has a flashlight and pick well-lighted streets.
-  Make sure kids know not to enter strangers' cars.





# City of Waterville

## WASTE COLLECTION REGULATIONS

Contracted Hauler:  
**Stevens Disposal & Recycling**  
Phone number **1-800-779-0344**  
Email:  
**Support@stevensdisposal.com**

**UNLIMITED TRASH  
PICK-UP  
MONDAY  
OCTOBER 6th, 2014**

1. Residents are limited to three (3) bags/containers per week. Each bag/container must weigh 50 lbs or less.
2. Households with an excess of 3 bags/containers may purchase extra bag tags for \$1.00 each at the **City Office, 25 N. Second St. (Hours are 8:00 a.m. to 4:30 p.m. Monday thru Friday).**
3. **Large, bulky items**, such as furniture and appliances are collected the same day as regular trash. Residents must purchase a bulk item sticker for each item. Large item tags are available for \$10.00 at the City Office.
4. **Appliances.** Residence are responsible for the removal of all Freon Refrigerants from applicable appliances prior to collection. A certification label must be affixed to the appliance. This requirement is mandated by Federal Law.
5. **Bi-Annual Unlimited Collections.** The City of Waterville will have a one day unlimited clean-up twice per year for residents to dispose of unwanted items. Collections will be curbside and items will not require tags on this day only.
6. **Holiday Collection Schedule.** Stevens Disposal & Recycling observes the following holidays: January 1, Memorial Day, July 4th, Labor Day, Thanksgiving Day & Christmas Day. There will be no collection of these holidays. Collections will be one day late for the day of the holiday and those days following. Monday collections will be on Tuesday. Holiday collection schedule does not apply if holiday is observed on a Saturday or Sunday.
7. **Exclusions.** Curbside collection excludes the following materials: Yard waste, including brush, grass, leaves, shrubs; auto parts; tires; building materials, including paint, concrete, metal pipes, and rocks; liquids, motor oil, hazardous chemicals, pesticides, insecticides; dead animals. If you have any questions regarding the handling or acceptability of an item, please contact Stevens Disposal or the City Office.
8. **Bags & Containers.** Use only standard, regulation metal or plastic waste containers or bags 1.5 mill or stronger.  
**Do not use cardboard boxes, waste basket liners, plastic or paper grocery bags, barrels or laundry baskets for the curbside collection of your waste or recyclables. This is a litter, as well as safety precaution for the drivers and collectors.**
9. **Special Services.** Stevens Disposal & Recycling Services provide collection and containers for special projects such as remodeling & certain excluded items. Please contact Stevens Disposal directly should you require additional or special services.

## CURBSIDE RECYCLING GUIDELINES

Residential curbside recycling is provided through the City's contract with Stevens Disposal & Recycling. Each Monday Stevens Disposal will pick up recyclables and refuse.

- Recyclables **do not** need to be sorted. Place your recycling bin at the curb away from your refuse. Do not use plastic bags or cardboard boxes as recycling containers. You can purchase extra recycling bins at the City Office, 25 N. Second St. (Hours are 8:00 a.m. to 4:30 p.m. Monday thru Friday).

### Recyclable Items Include:

1. **Newspapers and Cereal Box-Type Paperboard:** *Stack in paper grocery bags or tie with string. No wet newspapers.*
2. **Clear, Green, and Brown Glass Bottles and Jars:** *Remove lids and rings. Rinse clean.*
3. **Plastics #1 through #7:** *Remove lids and rings. Rinse clean. Flatten if you wish to save space.*
4. **Aluminum and Steel Cans:** *Rinse clean and remove any paper labels. For safety place the lid inside the can and pinch the end closed.*
5. **Brown or White Corrugated Cardboard:** *Remove all packing materials. Break boxes down into sections not more than two feet long. Bundle boxes together with string. You may leave tape, staples, and address labels on boxes.*



## WATER/SEWER BILLS

Please note that your Water/Sewer bills are Estimated every other month. The Estimated amounts are calculated using an average of the previous 12 months.

If you would prefer not to receive an Estimated Bill you can read your own **Inside Meter** on the Estimated Months and call 419-878-8101 or email the reading to [townhall@waterville.org](mailto:townhall@waterville.org). (be sure to put "Meter Reading" in the subject line of the email.) The **Inside Meter** needs to be read between the 15th—20th of the Estimated months. Please include your name, phone #, address, and account number if it is available when emailing or leaving a message.

The Months that the bills are Estimated are: February, April, June, August, October and December.

If you have any questions please call the Utility Department at 419-878-8101.

## Fire Hydrant Flushing & Testing

Fire Hydrants are flushed once a year to avoid rust build-up in the waterlines and to insure adequate fire protection. Hydrants will be flushed on a rotating basis, **each Tuesday, Wednesday & Thursday, afternoon throughout the year.** Since the location of testing varies from week to week, residents are asked to check their tap water on these days prior to

doing laundry, to avoid the possibility of rust coming through the lines. For those residents who do laundry during the time of testing, a rust remover is available and can be picked up at the Municipal Building.



## UNLIMITED TRASH PICK-UP

Semi-Annual Unlimited Garbage Pick-up  
for Waterville residents

**Monday October 6th**

(curbside by 7 a.m.)

**NOTE: REFUSE PICK UP  
WILL BE ON TUESDAY  
SEPTEMBER 2<sup>ND</sup>  
DUE TO THE  
Labor Day Holiday**

### Exclusions:


Curbside collection excludes the following materials:

- ◆ Yard Waste (including brush, grass, leaves, shrubs)
- ◆ Building materials (including liquid paint,)(dry paint or empty cans acceptable) concrete, metal pipes and rocks)
- ◆ Liquids of any kind
- ◆ Hazardous Chemicals (including pesticides and insecticides)
- ◆ Dead animals
- ◆ Motor oil, Auto Parts and Tires



**Appliances:** Residents are responsible for the removal of all Freon refrigerants from applicable appliances prior to collection by the contractor. A certification label must be affixed to the appliance. This requirement is mandatory by Federal Law.

Large, bulky items such as furniture and appliances will not require a bulk item sticker on this day only.

<u>Collection day for both trash &amp; recycling is Monday</u>					<b>Unlimited Trash Pick-Up Monday October 6th (see above)</b>
<b>TRASH &amp; RECYCLING SERVICES</b>	<b>Always</b>  <b>Delayed</b>  <b>If on</b>  <b>Monday:</b>	MEMORIAL DAY 4TH OF JULY LABOR DAY CHRISTMAS DAY NEW YEARS DAY	<b>Never</b>  <b>Delayed:</b>		
			MARTIN L. KING VETERAN'S DAY COLUMBUS DAY PRESIDENT'S DAY		
Please keep this <i>trash &amp; recycling schedule</i> handy for future reference.					

**DAYLIGHT SAVINGS TIME ENDS**

**SUNDAY, NOVEMBER 2<sup>ND</sup>**  
**AT 2:00 A.M.**



**DON'T FORGET TO SET YOUR CLOCKS BACK ONE HOUR**  
**Replace the batteries in your  
Smoke Detectors!**



**ELECTION DAY**

**TUESDAY, NOVEMBER 4<sup>TH</sup>**

**DON'T FORGET TO VOTE!**

### CPR TRAINING

The Waterville Fire Association will be offering  
CPR classes.

If you are interested please  
contact the

**Waterville Fire Department**  
**419-878-0165**



**LOCK YOUR DOORS  
&  
REPORT SUSPICIOUS ACTIVITY**

City residents are reminded to remove valuables from their parked vehicles and lock the car doors. Also please make sure that your overhead garage door is locked as well as your house. If you see or hear any suspicious activity in your neighborhood you are asked to call the:

**POLICE immediately at 419-878-6666 or 911.**

## ATTENTION !! ATTENTION!! ATTENTION!!



The Utility Department of Waterville has installed an outside drop box on 2nd St. for your convenience. Please either put your bill and payment in an envelope or clip them together. Please be sure to write your account number in the memo part of your check.

Of course the Municipal Office will still be open normal business hours if you would prefer.

If you are paying with cash please either bring it into the office or put in the inside drop slot in the lobby, Do NOT put cash in the outside drop box.

Thank you for your cooperation.



### FALL BEGINS AT YOUR WATERVILLE BRANCH LIBRARY

Storytimes and Children's Programming will start the week of September 15, and our popular Sit, Stay Read sessions with the therapy dogs runs for six weeks from Sept. 23—Oct. 28. Contact us soon to sign up for your favorite events!

Adult programs this fall include an Indoor Composting program on Sept. 16 and a craft program on Oct. 11 to create your own Art Card. Both our daytime and our evening Book Discussion groups are still going strong each month.

Not to leave the teens out, we have a College Resources Night on Oct. 22, and a Dream Interpretation program on Oct. 13. All ages are welcome to our historical program covering the events of April 19, 1775 in Lexington, Mass.

The Friends of the Library are planning a Book Sale on Roche de Boeuf day, Saturday, Sept. 27, at the library location. As you are making your way down to all the great city events that day, stop and browse through our selections.

*Waterville Branch Library ~ 800 Michigan Ave ~ Waterville, OH ~ 419-878-3055 ~ Karen Wiggins, Manager*

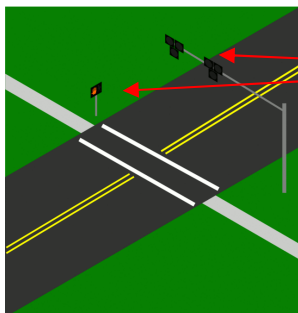


### ROAD CONSTRUCTION UPDATE

By the time this edition of the Canal Post is published, the Roundabouts on Waterville-Monclova / Dutch Rd. will be opened for traffic, and Pray Blvd. from the Kroger store onto Waterville-Monclova. Along Pray Blvd, there is a shared use path that is also complete.

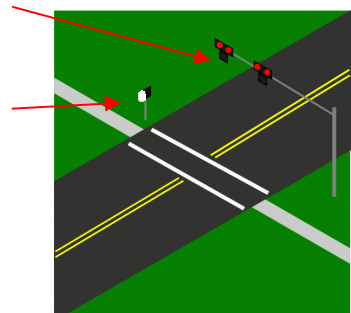
There will be a shared use path that is being constructed this fall on Waterville-Monclova that will run from the Farnsworth \ Waterville-Monclova intersection to S. River Rd.. The Metro Parks will then put in a shared use path connecting that path to the Tow Path in Farnsworth Metro Park. There will be a Pedestrian Signal installed. The Pedestrian Signal, also known as a Hawk beacon will allow Pedestrians to activate the signal and stop the traffic so they can cross. The Signal will be dark until activated by a pedestrian, so as not to impede traffic flow.

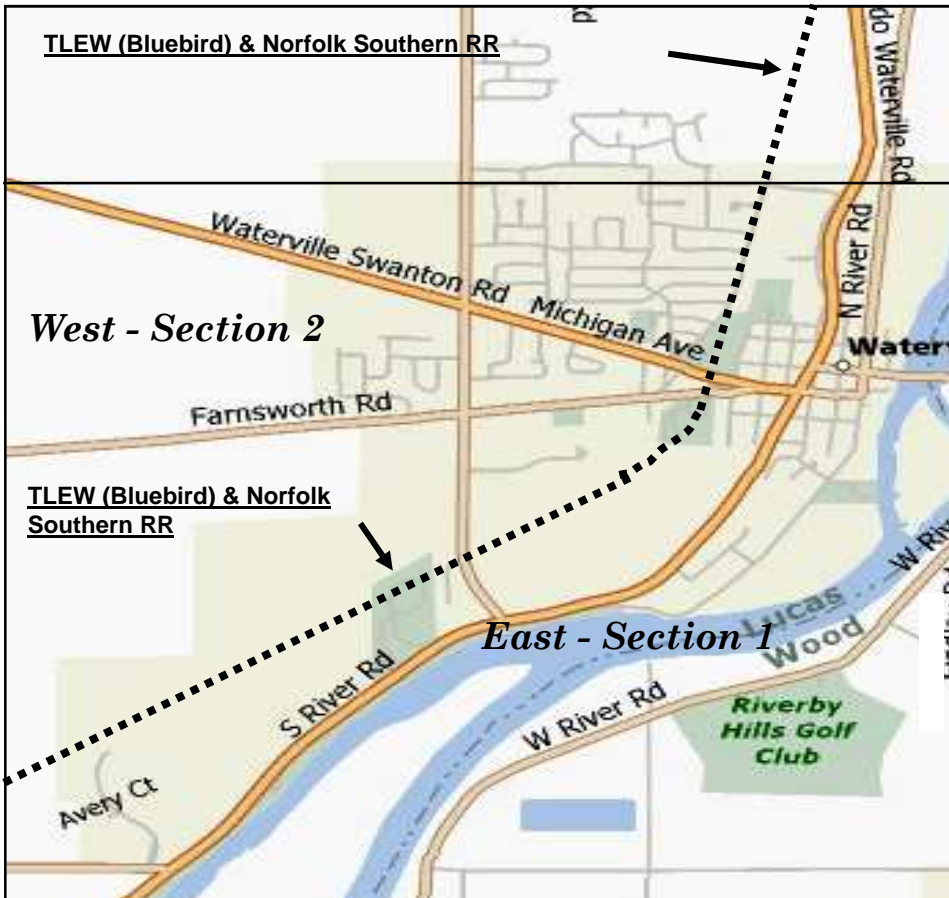
[Click here for more information on the Hawk beacon.](#)



This is the way the signal will look most of the time. Don't walk hand sign is red, and the traffic lights are dark.

When a pedestrian needs to cross, they will activate the signal and lights will start flashing yellow, alerting drivers that they will be needing to stop, when they stop flashing they will become red and the white walk sign will be visible. After pedestrian has crossed the traffic lights will return to dark and the walk sign will again turn red.





## ANNUAL SIX WEEK LEAF COLLECTION PROGRAM

**BEGINS OCTOBER 13<sup>th</sup>**

The Waterville Public Works Dept. will be collecting leaves throughout the City. The City will be divided into two sections at the TLEW Bluebird railroad tracks, with pick-up on alternating weeks between sections. See map and schedule below left. We ask that you please read and follow the reminders listed below:

- ◆ **Please DO NOT rake leaves into the street or put them in a container.**
- ◆ **Keep parked cars away from piles so that the crews can reach them easily.**
- ◆ **Check leaves for:**  
Limbs or sticks, corn stalks, garden waste, rocks, grass clippings & weeds.

Leaves mixed with these items **WILL NOT** be picked up! The items listed above can damage and/or clog the intake & vents on the equipment resulting in major costs & delays.

Please help us to better serve you by ensuring that these items are removed prior to collection.

**The City's leaf removal program will end**

**November 21<sup>st</sup>**

Anyone with leaves that fall late may dispose of them at the Clean Wood Recycling Facility located at 6730 Anthony Wayne Trail until Friday **November 28<sup>th</sup>**

If you have any questions please call the Public Works Dept. 419-878-8108

## Leaf Pick-Up Schedule

(weather conditions may affect schedule)

**OCTOBER 13<sup>th</sup> ~ EAST SECTION 1**

**OCTOBER 20<sup>th</sup> ~ WEST SECTION 2**

**OCTOBER 27<sup>th</sup> ~ EAST SECTION 1**

**NOVEMBER 3<sup>rd</sup> ~ WEST SECTION 2**

**NOVEMBER 10<sup>th</sup> ~ EAST SECTION 1**

**NOVEMBER 17<sup>th</sup> ~ WEST SECTION 2**





### ***“From This Old Catch Basin”***

Note: Here is some information about the release of phosphorus (P) from leaves and grass clippings. The striking bit from this data is the rapid release of P from lawn waste into the waterway.

Don't allow grass clippings and leaves to get into storm sewer drains. In Waterville, the storm drain system is most visible as catch basins along the edge of streets. It is so convenient, neat, quick and easy to use a blower after mowing and blow all that unsightly yard waste into the street and out of the way. From the street, it just goes away RIGHT?

Storm water discharges directly into a waterway that quickly ends up in Lake Erie. There is no sewage plant treatment of storm water. Keeping this source of lake water clean depends on keeping foreign materials away from rain water that is carried away.

Leaves and grass clippings contain significant quantities of P that quickly dissolves in water. This process releases P that is soluble, the dissolved P travels as a part of the water that enters Lake Erie. About 50% of the total P in leaves and clippings is released within ONE DAY of immersion in storm water.<sup>1</sup> The media describes what happens as the amount of dissolved P accumulates in Lake water and algae blooms begin to flourish.

Ditches, farm fields, overflowing sewage plants, failing septic systems, trees and brush that fall into creeks and rivers, organic materials in the rain water all release P that combines to result in algae that varies from nuisance to toxic putting the health of the Lake and all creatures that depend on the Lake at risk.

Please do your part to restore Lake Erie.

<sup>1</sup> Grass and Leaf Decomposition and Nutrient Release Study Under Wet Conditions information provided by Justin Strynuchuk and John Royal; Brevard County Surface Water Improvement. 2725 Judge Fran Jamieson Way, Viera, FL 32940

Also a yearly reminder from the Sewer Department

We can all be a part of the solution to storm water pollution if we practice common sense in our daily routines.

Some examples are:

Never Drain Antifreeze, motor oil or paint into a storm basin or storm sewer.

✦ Never dispose of any household chemicals or any animal waste into the storm system.

✦ Contact Town Hall at 419-878-8100, for information on proper disposal centers in Lucas County.

### ***A little bit of History...***

#### **A Tragic Accident**

##### ***From the Perrysburg Journal July 9, 1869***

After leaving a ball at the Columbian House around three o'clock in the morning, Andrew Ovitt, Oscar Lyons and his wife Adaline and her two sisters, Lodusca and Alice boarded their skiff to return to their homes on the other side of the river. The skiff which they used in crossing was perhaps half a mile above Waterville opposite Miltonville at the ferry. There was a deep fog and the water was swift and turbulent.

When they reached the middle of the river the boat tipped and took on water. Lodusca was frightened and jumped upon the edge of the boat while Alice sprang upon the back of Oscar Lyons and the skiff capsized. Oscar swam for Dodd's Island (Granger Island) which he reached safely though exhausted, while Alice was barely alive when dragged ashore. Andrew clung to the boat which was bottom up and helped Adaline and Lodusca partially upon it. The boat upset twice more and then got away from them. Adaline seized Andrew around the body and Lodusca clung to her sister. Though not a good swimmer he started towards the island, frequently getting his feet tangled in Adaline's clothing and all would go under. When within five feet of the island Andrew sprang for a limb of a tree and Adaline lost her grasp upon him and the two sisters were lost. Lodusca's body was recovered lodged in the roots of a tree not far from where she drowned, but Adaline's body drifted over a mile and was not found for a few days.

The three ladies were daughters of Mr. and Mrs. George Lomas of Miltonville. Adaline was about 20 years of age, Lodusca 18 and Alice 16.

### **Fire Hydrant Flushing & Testing**

Fire Hydrants are flushed once a year to avoid rust build-up in the waterlines and to insure adequate fire protection.

Hydrants will be flushed on a rotating basis, each Tuesday, Wednesday & Thursday, afternoon throughout the year.

Since the location of testing varies from week to week, residents are asked to check their tap water on these days prior to doing laundry, to avoid the possibility of rust coming through the lines. For those residents who do laundry during the time of testing, a rust remover is available and can be picked up at the Municipal Building





## CALLING EMERGENCY SERVICES

Provided by:

### The Waterville Police Department

911 is your connection to police, fire, and rescue services. Our Communication Operators are highly trained, dedicated professionals who assist you in getting the help you need. Please remember these tips whenever you call 911:

- ◆ Teach children to use 911 properly and remind them it is not a toy.
- ◆ Put your address information near the phone and make sure children and babysitters know where to locate it.
- ◆ If you dial 911 accidentally, please stay on the line and tell the operator it was an accident. If you hang up they will send emergency personnel to your location unnecessarily thus tying up resources.
- ◆ Be prepared to answer questions. Listen carefully; speak clearly and try to remain calm.
- ◆ You will be asked questions to determine the nature of your emergency.

- ◆ The call-takers are experienced “information gathers” and their persistence is based on a need to provide accurate and specific information to the attending emergency personnel.
- ◆ You will likely be asked many specific questions.
- ◆ Please understand that while they are asking you questions, they are relaying vital information simultaneously to emergency personnel.
- ◆ The more information emergency responders have before they arrive on the scene, the better prepared they are to help you.
- ◆ Communicate your location as soon as you are asked.
- ◆ Know your location at all times. This is particularly important if you are calling from a cell phone. Cell phones do not provide name, number or location information because the phone is not registered to a fixed location like an in-home telephone. This is a serious safety issue.
- ◆ You should know what city you are in, building or home address, cross street, landmarks, etc.
- ◆ Persons who place false 911 calls are violating the law and face criminal charges and fines.

# 911

### Bicycles

Each year there are numerous bicycles found and turned over to the Waterville Police Department. Most bicycles have no owner identification on them and go unclaimed. Waterville Municipal Code 373.12 requires bicycles that are used on any street or public place of the Municipality to be registered with the Police Department. Waterville residences can obtain bicycle license tags for **FREE** at the Waterville Police Department office 25 N. Second Street Waterville, Ohio 43566.

A bicycle being unlocked is a bigger factor in whether it gets stolen than how expensive the bicycle is.

#### Tips to prevent your bicycle from being stolen:

- **Never** leave your bicycle unlocked even for a minute.
- Use a bike lock. For the best protection, put the lock through both the frame and the front wheel when locking the bicycle to something. U-Locks are better than cable or chain locks both together are best.

- **Always** secure your bicycle to a **SOLID** object.
- **Lock** your bicycle in an open, well-lit area that can be seen by pedestrians and passing motorists.
- **Do not** leave your bicycle in a rack overnight. Check the rack to see if is easy to take apart or broken at the top or bottom.
- **Be sure** to secure any quick-release parts such as wheels or seat posts.



Report your stolen or missing bicycle promptly to the police department.

The City of Waterville is always interested in hearing opinions and comments from its residents. Please visit the Contact page on our website [www.waterville.org](http://www.waterville.org) or send us a note and tell us of your suggestions about our city.

**The Waterville Municipal Building**

**25 N. Second St.**

**Waterville, OH 43566**

When writing a check to the City for a Utility Payment please make check out to **\*\*City of Waterville, or just Waterville\*\***

---

---

---

---

---

---

---

---

# 41st Annual Roche de Boeuf Festival

Presented by: The Waterville Area  
Chamber of Commerce



**Parade Begins at 9am  
down Farnsworth Rd**

**Inflatable rides - Pioneer Arts  
LIVE ENTERTAINMENT  
Pony Rides - Rue des Artistes  
and so much more!**

For more information, visit:  
[www.watervillechamber.com](http://www.watervillechamber.com)  
E: [admin@watervillechamber.com](mailto:admin@watervillechamber.com)  
P: 419.878.5188



**13th Annual Car Show**  
Enter your car for a chance to  
win great prizes!



*Roche de Boeuf is the French translation which means "rock of Beef or Buffalo Rock" commemorating the rock which is still present in the Maumee River area of Waterville at the old Electric Railway Bridge.*



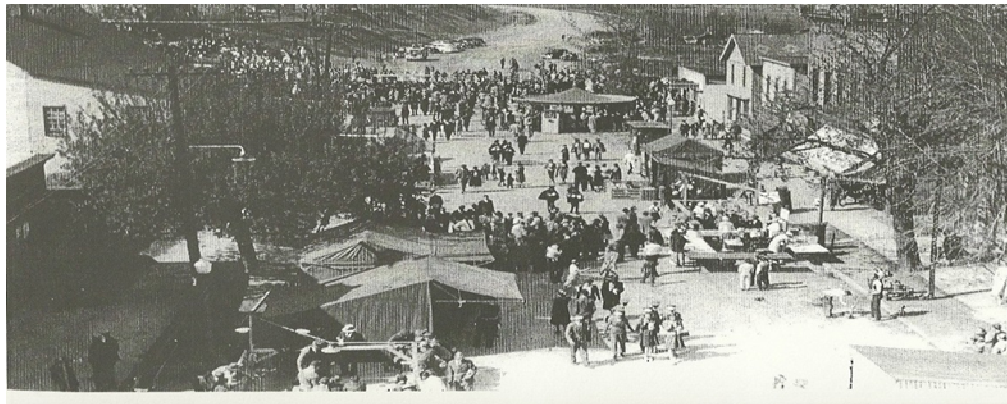
***Roche de Boeuf Festival Features “Pioneer Arts”*****Waterville Historical Society...celebrating 50 years in the community!**Come and visit our **PIONEER ARTS** area:

Roche de Boeuf Day, Saturday, Sept. 27, 2014 ~ 9 AM-3 PM

**114 S. River Rd. & South Street**, 1 block south of old Waterville School

Visit Red Bear & his encampment of hunters & trappers, demonstrating native American skills; over 30 artisans with interactive experiences for kids, e.g. butter churning, corn shelling, pottery, tin punching, basket weaving & much more! Music, stage performances, square dancing, storytelling. Museum tours, “Attic Treasures” sales, many attractions for history lovers, families, and friends.

**Free admission! Hands-on historic experiences for kids of all ages!**

**What is a Chinese Auction?**

A gold and white art glass vase signed and dated 1986 by the late Brian Lonsway will be one of five items featured in a Chinese Auction on RDB Day. Displayed on the grounds of the Robbins House Museum, each item will have a container for raffle tickets. This will allow people to select which prize they hope to win and insert as many raffle tickets as they wish. Besides three other pieces of art, a lovely wicker chair will be one of the prizes. Winners need not be present to win at the drawing at the end of the day.

*The Waterville Historical Society continues celebrating their 50th anniversary year  
with the following events:*

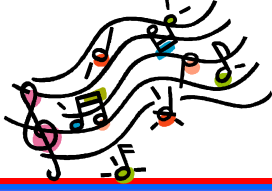
**Wednesday, October 22**—Meet at Wakeman Cemetery for “A Ghostly Encounter” at 6:30 p.m. Citizens from the past may appear to tell about their lives in the early days of Waterville.

**Wednesday, November 19**—“Railroads & Telegraphy: Connecting Waterville to the Outside World,” Wakeman Hall at 7:00 p.m. Local Railroad buffs will move us from River Town to Canal Town to Rail Town!

**Wednesday, December 17**—Christmas at Browning



**Kick off the RDB weekend festival with a Friday Night Street Party  
on South Third Street sponsored by the Waterville Rotary and Shawn's Irish Tavern.**



Live Music with Johnny Rodriguez  
Friday Sept 26th from 7p.m. to 11p.m.  
\$2 cover for the beverage tent.



# Buck - a - Duck

Saturday—September 27, 2014

## Races 2014

@ the Roche de Boeuf Festival in Waterville  
(race is in the afternoon behind the old school)

1st place: \$500 - 2nd place: \$250 - 3rd place: \$100  
(proceeds to fund out annual Scholarship Program)

for more information on Rotary: please  
call President, Jerry Peacock 419-283-8421

[www.rotarydistrict6600.org](http://www.rotarydistrict6600.org)

[www.rotary.org](http://www.rotary.org)

[www.watervilleohiorotary.org](http://www.watervilleohiorotary.org)

meetings Mondays at 6pm @ Shawn's  
Tavern in Waterville



## Waterville Rotary Club

serving all of the Anthony Wayne Area and Beyond

### 12TH ANNUAL ROCHE DE BOEUF CAR SHOW

SPONSORED BY: WATERVILLE AREA CHAMBER OF COMMERCE, SHAWN'S IRISH TAVERN, YARK AUTO, CENTURY LINK, THE CITY OF WATERVILLE AND LLOYD BROTHERS AUTOMOTIVE

**SATURDAY, SEPTEMBER 27, 2014**

SHAWN'S IRISH TAVERN PARKING LOT!!!

CORNER OF 3<sup>RD</sup> ST AND SOUTH ST

ENTER OFF OF AW TRAIL (SR 24) AND SOUTH ST

**SORRY NO MOTORCYCLES**

**AW TRAIL WILL BE CLOSED FROM 9 AM – 10:30 AM  
FOR THE PARADE**

**PLEASE FOLLOW THE DETOUR SIGNS IF YOU ARRIVE BETWEEN 9-10:30 AM**

Registration 8:00 am to 11 am-Awards presented at 2:00 pm.

**TROPHIES DONATED BY: MARTIN LARK INSURANCE**

Sponsored by:



**RAIN OR SHINE...NO REFUNDS!**

Name: \_\_\_\_\_ Address: \_\_\_\_\_

City: \_\_\_\_\_ ST: \_\_\_\_\_ Zip: \_\_\_\_\_ Phone: \_\_\_\_\_ Email: \_\_\_\_\_

Year, Make and Model Vehicle(s): **CHOOSE ONLY ONE CATEGORY**

Categories: \_\_\_\_\_ Pre 1930, \_\_\_\_\_ 1930-1940's \_\_\_\_\_ 1950's, \_\_\_\_\_ 1960's, \_\_\_\_\_ 1970's, \_\_\_\_\_ 1980's-to present

\_\_\_\_\_ Corvettes, \_\_\_\_\_ Custom/Hotrod, \_\_\_\_\_ Truck, \_\_\_\_\_ Mustang, \_\_\_\_\_ Camaro, \_\_\_\_\_ Mopar, \_\_\_\_\_ European

Registration Fee: \_\_\_\_\_ \$5 by September 17, 2014 \_\_\_\_\_ \$10 day of show \_\_\_\_\_ # attendees

Total Enclosed: \$ \_\_\_\_\_ Make Check payable to: WACC

PO Box 74, 122 Farnsworth Road, Waterville, OH 43566

For additional info please call WACC at 419-878-5188, or 419-351-8703

Disclaimer: By attending this event, I hereby hold harmless the Waterville Area Chamber of Commerce (WACC) Shawn's Irish Tavern, Lloyd's MuscleCar Garage, Glass City Corvette Club its employees and the car show volunteers from any damage that may occur during the event. WACC is not responsible for any damage to any vehicle at the show. I attend and participate at my own risk.

Name \_\_\_\_\_ Date \_\_\_\_\_



**CenturyLink™**





# Waterville Fire Department

## \*FLASH POINT\*



### Volunteer Firefighters Needed

The City of Waterville Fire Department is looking for persons that would be interested in becoming volunteer firefighter/EMT's. Waterville's Fire Department is staffed by 30 volunteers, and 15 part-paid personnel that work 12 hour days during the workweek. The fire chief is the only full-time employee of the fire department. Across Ohio, the need for volunteer firefighter to fill the ranks of the fire service continues to be a challenge for small communities. Approximately 75% of fire departments in Ohio are staffed by volunteer firefighters.

Individuals that are interested in volunteering must be at least 18 years of age at time of applying, and possess a high school diploma or GED. In addition, volunteers must reside within the City of Waterville Fire Department's fire jurisdiction – which is the City and portions of Waterville Township. Volunteers start their fire service training by obtaining the Firefighter I certification; and within the first year are also required to become Emergency Medical Technician-Basic service providers. Volunteers train every Tuesday evening between the hours of 7 – 9 pm, or Wednesday morning between the hours of 9 – 11am, providing a flexible schedule for persons that may work various shifts. In addition, volunteers are compensated for their time, which includes training and fire and emergency medical service incidents. If you are interested and would like to learn more about this opportunity to serve your community, please stop at the Waterville Fire Department, located at 751 Waterville-Monclova Road, Monday through Friday, and ask to speak to the fire chief about applying. You can also contact us at [watervillefire@waterville.org](mailto:watervillefire@waterville.org) or call 419-878-0165.

There are several points of interest regarding fire safety that are important for homeowners to be aware of and carry out, especially with fall and winter approaching:



It is a proven fact that smoke detectors save lives! Throughout Ohio and across the United States, each year many persons perish or injured because they do not have working smoke detectors in their homes. According to the State Fire Marshal's office, there have been 72 fire deaths as of August 7, 2014. Many of these deaths could have been prevented in working smoke detectors had been installed and maintained in homes. Smoke detectors should be located on every level of your home. And more importantly, should be maintained. Replace smoke detectors that are over 10 years old, and change the batteries when you change your clocks.



Now is the time of year to change your clocks back an hour, so it is also time to change the battery in your smoke detector(s). Batteries are relatively an inexpensive item to purchase to assist in maintaining these fire safety devices - that can help save your life if a fire should occur in your home. Even if the smoke detectors in your home are hard-wired to the house's electrical power system, a battery back-up in a smoke detector provides the extra assurance that the detector will work if the power goes out.



Can't afford a smoke detector for your home? The Waterville Fire Department has made arrangements with the Safe Kids Coalition of Greater Toledo to have smoke detectors available at the Waterville Fire Department for families that cannot afford these life-saving devices. If you are in need of a smoke detector, please contact the Waterville Fire Department at 419-878-0165, Monday through Friday, for further assistance.



Do you have a wood-burning fireplace in your home? When was the last time it was cleaned by a professional chimney sweep? It is important to have wood-burning fireplaces or stoves cleaned by a professional on a yearly basis, especially if you use this type of heating appliance on a regular basis. The build-up of creosote on the lining of a fireplace or stove's flue can create a dangerous condition if the flue itself catches fire. Professional chimney sweeps can be found in the telephone book's yellow pages if you need this work completed.

### BACK TO SCHOOL

It's that time of the year again; our streets are filled with children, cars and buses. We must stay vigilant and focus on our surroundings especially in a school zone, around Bus stops in neighborhoods, residential streets, school crossing and pedestrians sidewalks. This activity will occur twice a day, in the morning and the afternoon. If at all possible try to avoid these areas at this time. If it is unavoidable please proceed with extreme caution.

In some areas school may have already started back and you might see an increase in traffic volume, we must plan ahead and set our route accordingly. Give yourself adequate time when traveling through school zones. It's a slow go process so watch your speed and obey all state and federal laws while in a school zone.



Keep your cool and focus on the job at hand,  
remember the life of a child is in your hands.



Become a part of Waterville's history with the purchase of an engraved brick for you or your loved ones! Bricks are located in the entranceway of the clock tower building at the corner of the Anthony Wayne Trail and Farnsworth Road and are visible to thousands of visitors to downtown Waterville each year.

Engraved bricks make a great permanent gift and are an excellent way to commemorate any special occasion, to recognize family members or to provide a lasting memorial for a loved one. Each brick you purchase helps to support revitalization efforts in downtown Waterville.

Engraved bricks are available in two sizes:

4" X 8" with up to three lines of text with up to 13 characters in each line (including spacing and punctuation) per line: \$100.00

8" X 8" with up to six lines of text with up to 13 characters in each line (including spacing and punctuation) per line: \$225.00

To order your engraved brick, simply fill out the form below and drop it off or send it along with payment to the:

City of Waterville, 25 N. Second St., Waterville, Ohio 43566-1491.

If you have any questions, please call the City at 419-878-8100.

-----  
I would like to purchase an engraved brick [☐ 4" X 8"] [☐ 8" X 8"] (check one).

Name: \_\_\_\_\_

Address: \_\_\_\_\_

City, State, Zip: \_\_\_\_\_

Daytime Phone: \_\_\_\_\_

Email Address: \_\_\_\_\_

A check for \$\_\_\_\_\_ is enclosed.

**PLEASE CLEARLY PRINT COPY (No Logos) EXACTLY AS IT IS TO APPEAR ON YOUR BRICK\*** (Including spacing and punctuation); All engravings will be centered & will use both upper & lower case letters

Line 1:   \_\_  \_\_  \_\_  \_\_  \_\_  \_\_  \_\_  \_\_  \_\_  \_\_  \_\_  \_\_  \_\_  \_\_

Line 2:   \_\_  \_\_  \_\_  \_\_  \_\_  \_\_  \_\_  \_\_  \_\_  \_\_  \_\_  \_\_  \_\_  \_\_

Line 3:   \_\_  \_\_  \_\_  \_\_  \_\_  \_\_  \_\_  \_\_  \_\_  \_\_  \_\_  \_\_  \_\_  \_\_

Line 4 (8" X 8" ONLY):   \_\_  \_\_  \_\_  \_\_  \_\_  \_\_  \_\_  \_\_  \_\_  \_\_  \_\_  \_\_  \_\_  \_\_

Line 5 (8" X 8" ONLY):   \_\_  \_\_  \_\_  \_\_  \_\_  \_\_  \_\_  \_\_  \_\_  \_\_  \_\_  \_\_  \_\_  \_\_

Line 6 (8" X 8" ONLY):   \_\_  \_\_  \_\_  \_\_  \_\_  \_\_  \_\_  \_\_  \_\_  \_\_  \_\_  \_\_  \_\_  \_\_